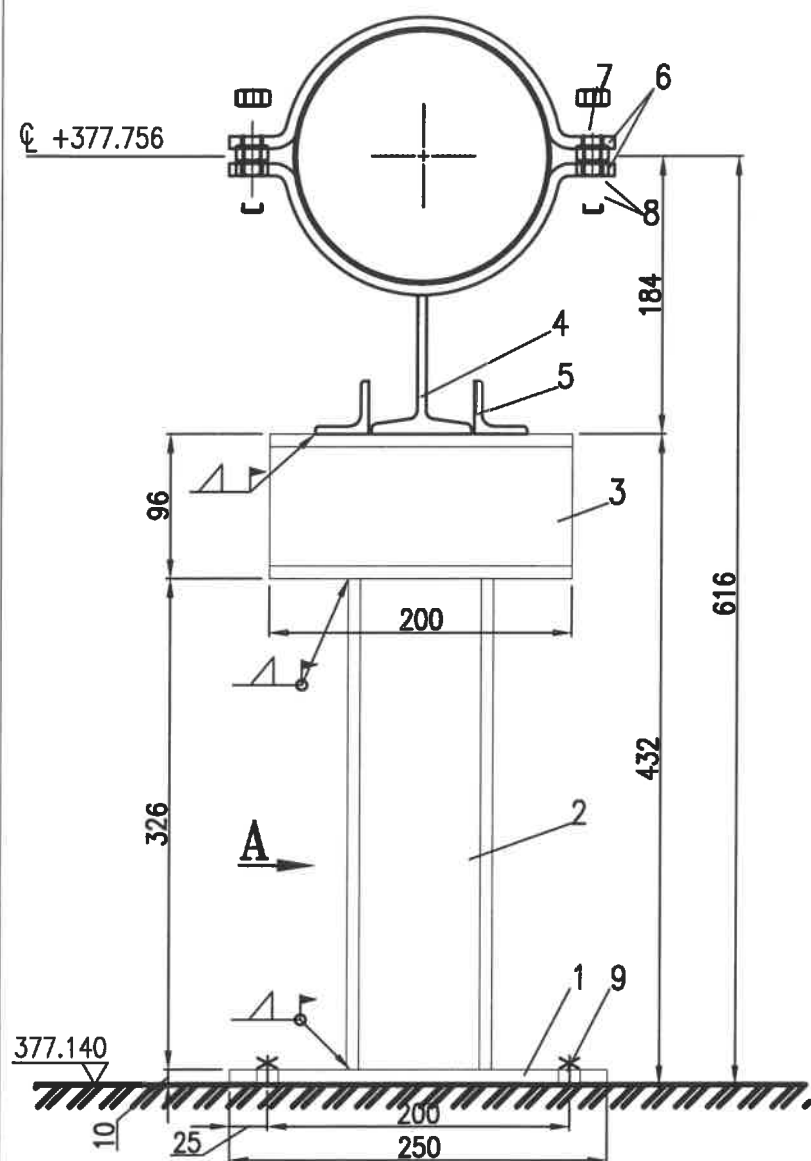
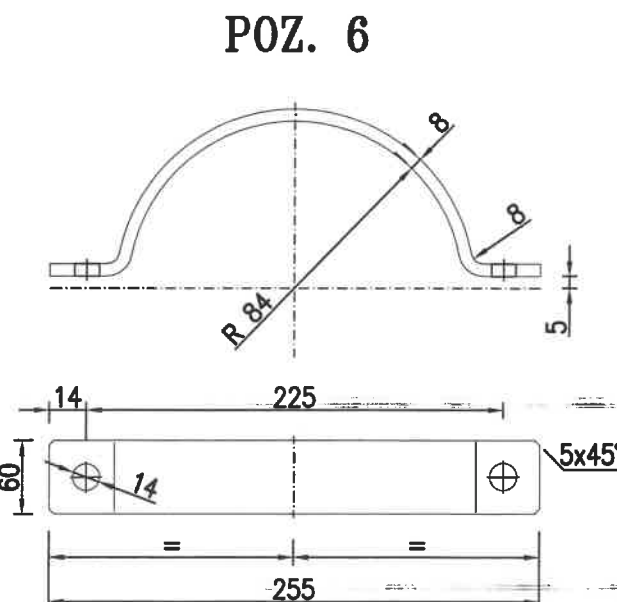
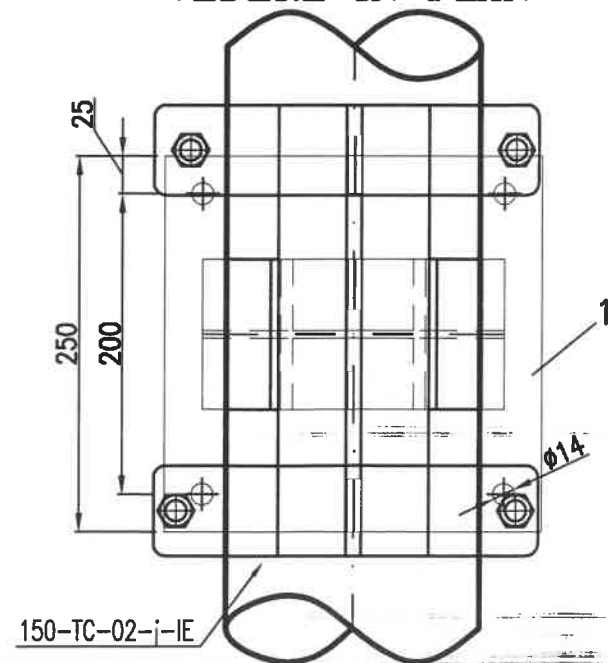


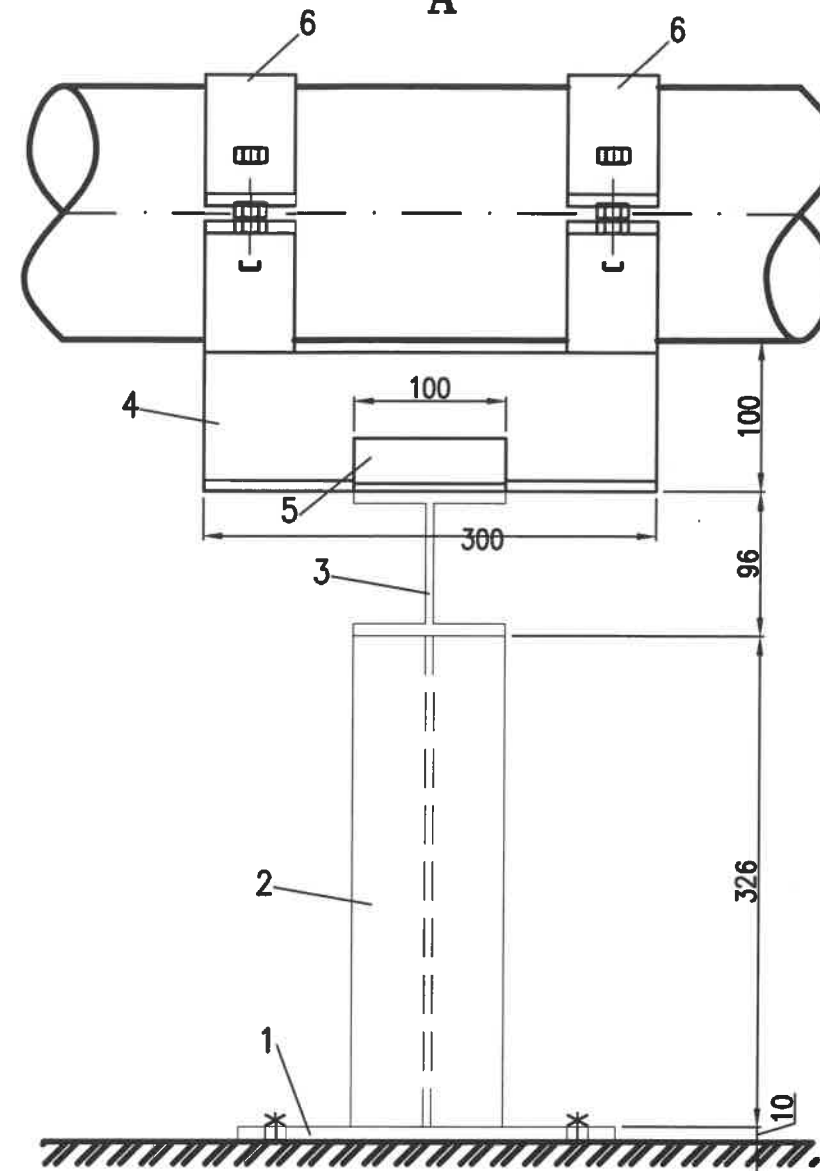
S1.1÷S1.3



VEDERE IN PLAN



"A"



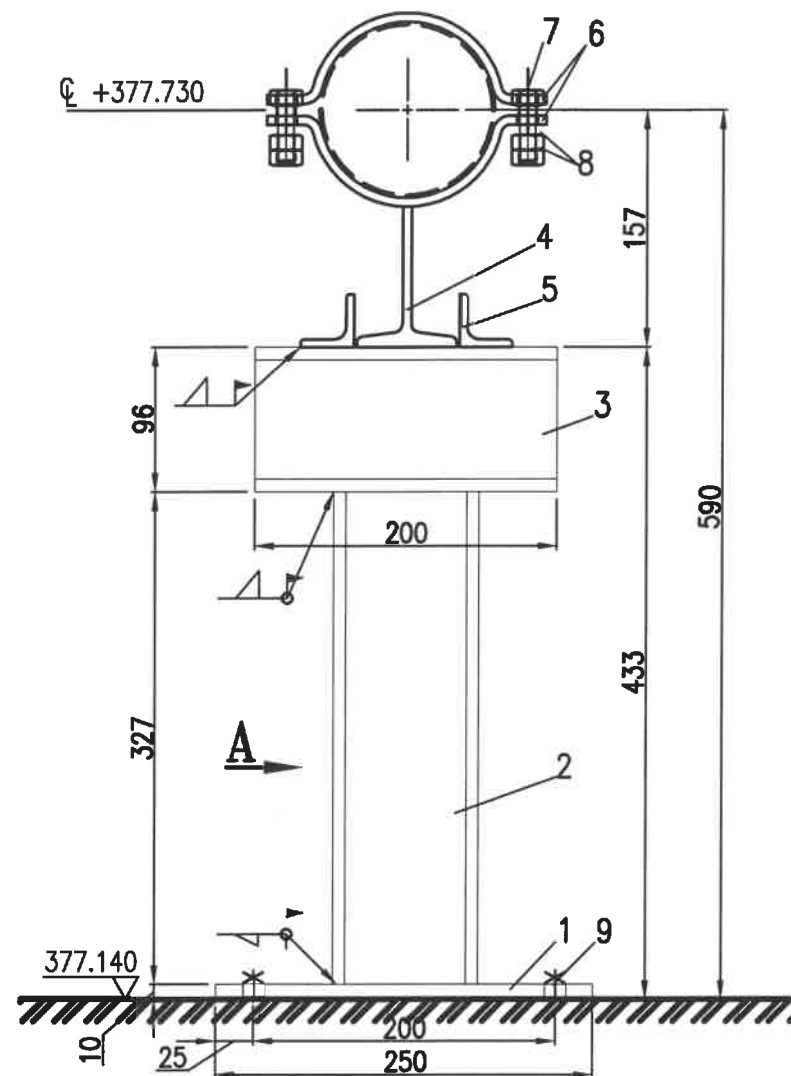
NOTE

- PENTRU AMPLASARE SUPTURI, VEZI PLAN ME16-00;
- TOLERANTE GENERALE CONFORM SR EN 22768/1:1995
- TOLERANTE PENTRU CONSTRUCTIILE SUDATE CONF. SR EN ISO 13920:1998
- NIVEL DE ACCEPTARE "C" A IMBINARILOR SUDATE CONF SR EN ISO 5817:2004
- PROTECTIA ANTICOROZIVA SE VA OBTINE PRIN SISTEMUL DE VOPSIRE S301 CONF. SR EN ISO 12944-2/3/5
- DOMENIU DE VERIFICARE-PENTRU CONSTRUCTII METALICE-25 (CONF.LG.Nr.440/2002)

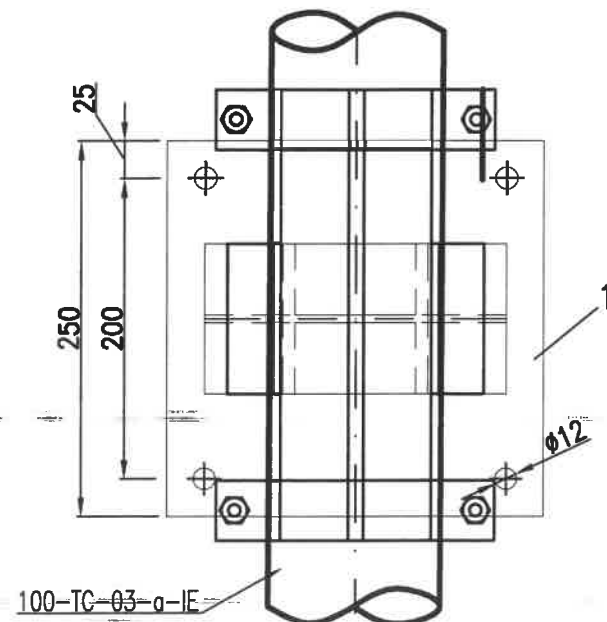
No.	DESCRIPTION	DOCUMENT No.	PCS.	MATERIAL	WEIGHT
9	ANCORA CHIMICA M12x250	TIP HILTY	4	GALVANIZED	1.00
8	PIULITA HEXAGONALA M12	SR EN ISO 4032:2013	16	gr.6	-
7	SURUB CU CAP HEXAGONAL M12x50	SR EN ISO 4017:2011	4	gr.6.8	-
6	CLAMP/SARNIERA 8x60x685	SR EN 10029:2011	4	S235JR	2.800
5	GHIDAJ L35X35X5-100mm	SR EN 10034 :1995	2	S235JR	0.640
4	PROFIL T100x100 L=300	SR EN 10056 : 2000	1	S235JR	8.500
3	PROFIL HEA100 L=100 mm	SR EN 10279-1:2002	1	S235JR	1.710
2	PICIOR SUPT HEA100 L=326 mm	SR EN 10034 :1995	1	S235JR	5.574
1	PLATE DE BAZA Tb10x250x250	SR EN 10029:2011	1	S235JR	4.906

1	05.2022	EMIS PENTRU CONSTRUIRE	DAN M.	NAN J.C.	STAN C.	NAN J.C.
0	06.2021	EMIS PENTRU COMENTARII	DAN M.	NAN J.C.	STAN C.	NAN J.C.
REV. Nr.	DATA	DESCRIERE	PROIECTAT	VERIFICAT	SEF PROIECT	APROBAT
SCARA: —		DATA PRIMEI EDITII: 06.2021	PROIECTANT			
CLIENT:			PROIECTANT:			
 S.C.CONPET S.A. STR. 1848, NR. 1 – 3 PLOIESTI, ROMANIA			 S.C. TEAM OIL S.R.L. STR. TRAIAN NR. 42 PLOIESTI, ROMANIA J29/695 din 22.08.2000			
DENUMIRE PROIECT:						
MODERNIZAREA STATIEI DE POMPARE A TITEIULUI SLOBOZIA JUD. PRAHOVA						
DENUMIRE PLAN:						
SUPORT CONDUCTA ASPIRATIE POMPA S1.1÷S1.3						
PROIECT NR.		FAZA	FORMAT	DESEN NR.	PAGINA. NR.	REV. NR.
1139/2019		PT+DE	A3	PR1193-ME15-01	1/3	1

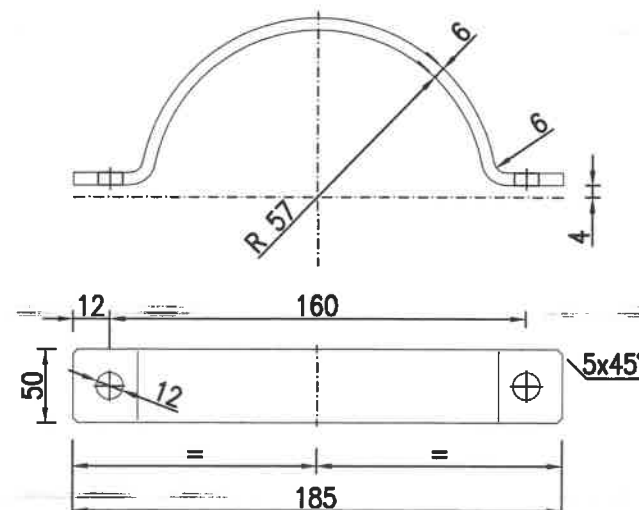
S2.1÷S2.7



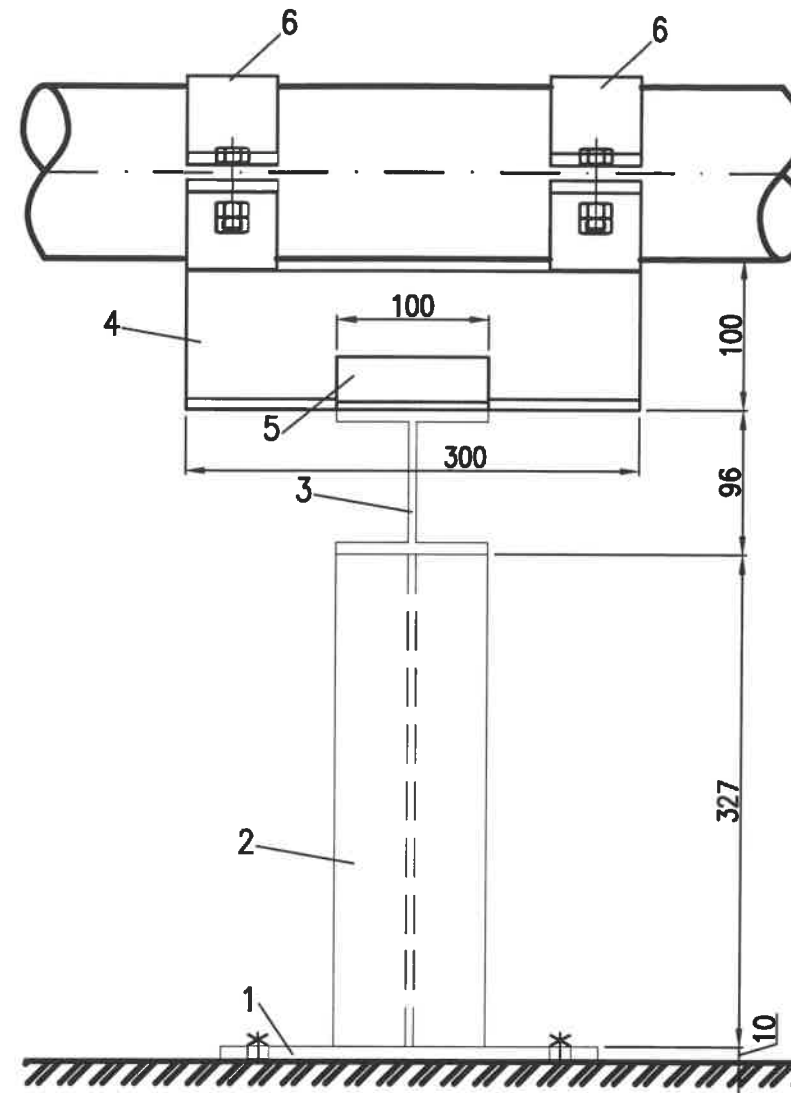
VEDERE IN PLAN



POZ. 6



"A"



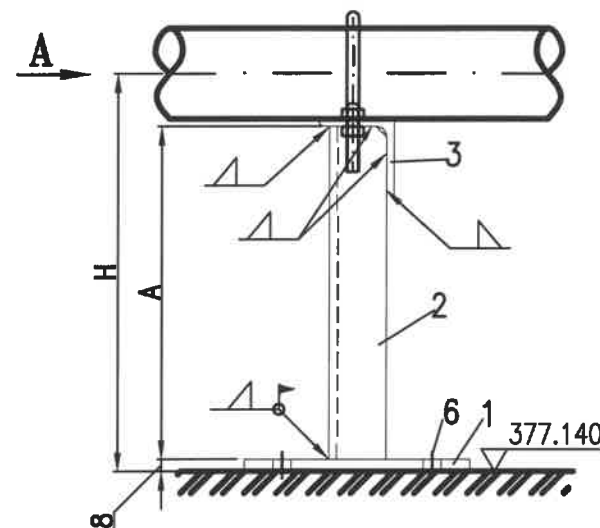
NOTE

- PENTRU AMPLASARE SUPTURI, VEZI PLAN ME16-00;
- TOLERANTE GENERALE CONFORM SR EN 22768/1:1995
- TOLERANTE PENTRU CONSTRUCTIILE SUDATE CONF. SR EN ISO 13920:1998
- NIVEL DE ACCEPTARE "C" A IMBINARILOR SUDATE CONF SR EN ISO 5817:2004
- PROTECTIA ANTICOROZIVA SE VA OBTINE PRIN SISTEMUL DE VOPSIRE S301 CONF. SR EN ISO 12944-2/3/5
- DOMENIU DE VERIFICARE-PENTRU CONSTRUCTII METALICE-25 (CONF.LG.Nr.440/2002)

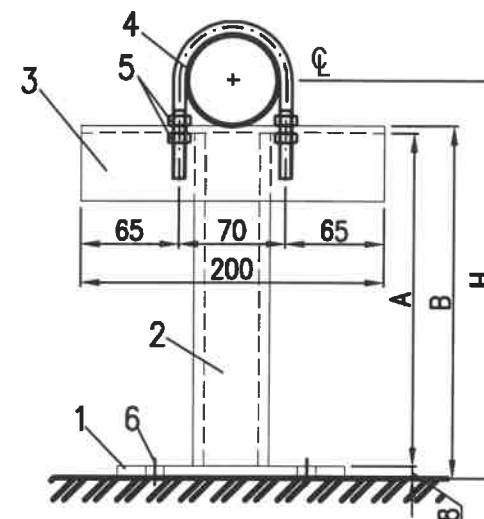
No.	DESCRIPTION	DOCUMENT No.	PCS.	MATERIAL	WEIGHT
9	ANCORA CHIMICA M12x250	TIP HILTY	4	GALVANIZED	1.00
8	PIULITA HEXAGONALA M10	SR EN ISO 4032:2013	16	gr.6	-
7	SURUB CU CAP HEXAGONAL M10x40	SR EN ISO 4017:2011	4	gr.6.8	-
6	CLAMP/SARNIERA 6x50x485	SR EN 10029:2011	4	S235JR	1.300
5	GHIDAJ L35X35X5-100mm	SR EN 10034 :1995	2	S235JR	0.640
4	PROFIL T100x100 L=300	SR EN 10056 : 2000	1	S235JR	8.500
3	PROFIL HEA100 L=100 mm	SR EN 10278-1:2002	1	S235JR	1.710
2	PICIOR SUPORT HEA100 L=327 mm	SR EN 10034 : 1995	1	S235JR	5.591
1	PLATE DE BAZA Tb10x250x250	SR EN 10029:2011	1	S235JR	4.906

1	05.2022	EMIS PENTRU CONSTRUIRE	DAN M.	NAN J.C.	STAN C.	NAN J.C.
0	06.2021	EMIS PENTRU COMENTARII	DAN M.	NAN J.C.	STAN C.	NAN J.C.
REV. Nr	DATA	DESCRIERE	PROIECTAT	VERIFICAT	SEF PROIECT	APROBAT
SCARA: -		DATA PRIMEI EDITII: 06.2021	PROIECTANT			
CLIENT:			PROIECTANT:			
 S.C.CONPET S.A. STR. 1848, NR. 1 - 3 PLOIESTI, ROMANIA			 S.C. TEAM OIL S.R.L. STR. TRAIAN NR. 42 PLOIESTI, ROMANIA J29/695 din 22.08.2000			
DENUMIRE PROIECT:						
MODERNIZAREA STATIEI DE POMPARE A TITEIULUI						
SLOBOZIA-JUD. PRAHOVA						
DENUMIRE PLAN:						
SUPORT CONDUCTA ASPIRATIE POMPA S2.1÷S2.7						
PROIECT NR.		FAZA	FORMAT	DESEN NR.	PAGINA. NR.	REV. NR.
1139/2019		PT+DE	A3	PR1193-ME15-01	2/3	1

S3.1÷S3.3



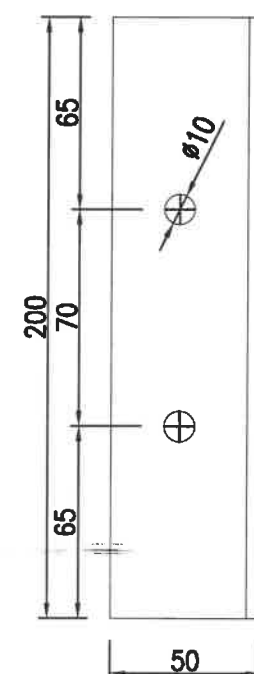
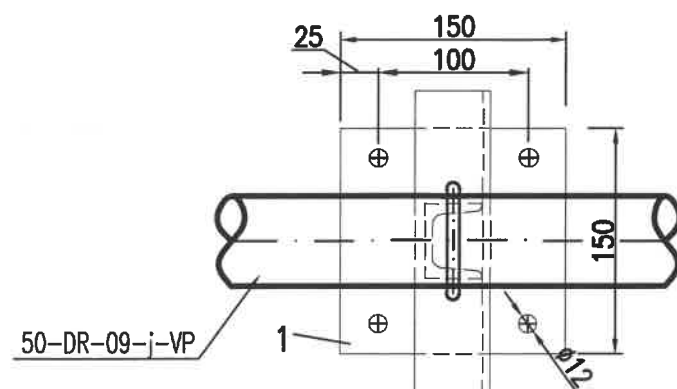
VIEW "A"



POS. 3

SCALE 1:2.5

TOP VIEW

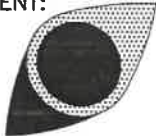


NR. SUPORT	NR. LINIE	℄	H (mm)	A (mm)	B (mm)	WEIGHT poz. 2 (kg)
S3.1	50-DR-09-j-VP	377.376	236	193	206	1.042
S3.2	50-DR-09-j-VP	377.391	251	208	221	1.124
S3.3	50-DR-09-j-VP	377.404	264	221	234	1.200

NOTE

- PENTRU AMPLASARE SUPTURI, VEZI PLAN ME16-00;
- TOLERANTE GENERALE CONFORM SR EN 22768/1:1995
- TOLERANTE PENTRU CONSTRUCTIILE SUDATE CONF. SR EN ISO 13920:1998
- NIVEL DE ACCEPTARE "C" A IMBINARILOR SUDATE CONF SR EN ISO 5817:2004
- PROTECTIA ANTICOROZIVA SE VA OBTINE PRIN SISTEMUL DE VOPSIRE S301 CONF. SR EN ISO 12944-2/3/5
- DOMENIU DE VERIFICARE-PENTRU CONSTRUCTII METALICE-25 (CONF.LG.Nr.440/2002)

No.	DESCRIPTION	DOCUMENT No.	PCS.	MATERIAL	WEIGHT
6	ANCORA CHIMICA M10x250	TIP HILTY	4	GALVANIZED	1.00
5	PIULITA HEXAGONALA M8	SR EN ISO 8121/3:84	4	25CrMo4QT	-
4	BRIDA 2" (ø8x240)	SR EN 10060:2004	1	S235JR	0.200
3	PROFIL L50x50x5 L=200mm	SR EN 10056-1:2002	1	S235JR	0.754
2	PICIOR SUPORT U50x38 L=A mm	SR EN 10279 :2002	1	S235JR	VEZI TABEL
1	PLATE DE BAZA Tb8x150x150	SR EN 10029:2011	1	S235JR	1.400

1	05.2022	EMIS PENTRU CONSTRUIRE	DAN M.	NAN J.C.	STAN C.	NAN J.C.
0	06.2021	EMIS PENTRU COMENTARII	DAN M.	NAN J.C.	STAN C.	NAN J.C.
REV. Nr	DATA	DESCRIERE	PROIECTAT	VERIFICAT	SEF PROIECT	APROBAT
SCARA: -		DATA PRIMEI EDITII: 06.2021	PROIECTANT			
CLIENT:			PROIECTANT:			
 S.C.CONPET S.A. STR. 1848, NR. 1 - 3 PLOIESTI, ROMANIA			 S.C. TEAM OIL S.R.L. STR. TRAIAN NR. 42 PLOIESTI, ROMANIA J29/695 din 22.08.2000			
DENUMIRE PROIECT:						
MODERNIZAREA STATIEI DE POMPARE A TITEIULUI SLOBOZIA JUD. PRAHOVA						
DENUMIRE PLAN:						
SUPORT CONDUCTA ASPIRATIE POMPA S3.1÷S3.3						
PROIECT NR.		FAZA	FORMAT	DESEN NR.	PAGINA. NR.	REV. NR.
1139/2019		PT+DE	A3	PR1193-ME15-01	3/3	1